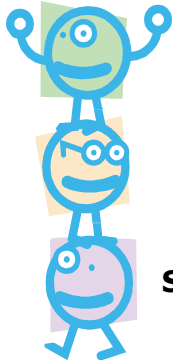




ACCESSIBLE RECREATION SPRING PROGRAMS FOR ADULTS (18 AND UP) WITH DISABILITIES



Please complete **Registration Form** and send payment!



T.E.A.M AT NORTHVIEW CENTER

(Travel, Entertainment, Art and Music Class)

Session activities include: Sports, Games, Arts & Crafts, Exercise & Nutrition, Current Events, Community Activities and more! Specific activities are planned by the participants!

Class meets on **Tuesdays** from **3:30-7:00 pm**

Bring your own supper!

Session 1: Jan. 12 – Feb. 23, 2010

Register by Dec 31, 2009

Fee: \$25.00 per 7- week session (\$25.00 class fee + \$5.00 bus fee = \$30.00)

Session 2: March 9 – April 20, 2010

Register by March 5, 2010

Fee: \$25.00 per 7- week session (\$25.00 class fee + \$5.00 bus fee = \$30.00)

SOME ACTIVITIES/FIELD TRIPS MAY HAVE AN ADDITIONAL COST.

Class size is limited to 40 participants.

WEDNESDAY CERAMICS

Create your own ceramics! For participants who can understand directions and work independently.

Class meets **Wednesdays** from **9:00 am—12:00 pm**

Transportation is not available for Wednesday Ceramics Class!

7-week Sessions: Jan. 13 - Feb. 24, 2010

Register by: Dec. 31, 2009

March 10 - April 21, 2010

March 5, 2010

Fee: \$25.00 for 7- week session.

There is an additional charge for certain items.

SUPPORT STAFF OR PERSONAL ATTENDANTS ARE WELCOME TO PARTICIPATE BUT ARE RESPONSIBLE FOR THEIR OWN SUPPLIES IN ADDITION TO THE \$25.00 FEE.



Class size is limited to 15 participants.

THURSDAY CERAMICS

Create your own ceramics! For participants who can understand directions and work independently.

Class meets on **Thursdays** from **10:00am-2:00pm**

Bring your own lunch!

Session 1: Jan 14– Feb 25, 2010

Register by Dec 31, 2009

Fee: \$25.00 per 7- week session (\$25.00 class fee + 5.00 bus fee = \$30.00)

Session 2: March 11– April 22, 2010

Register by March 5, 2010

Fee: \$25.00 per 7- week session (\$25.00 class fee + \$5.00 bus fee = \$30.00)

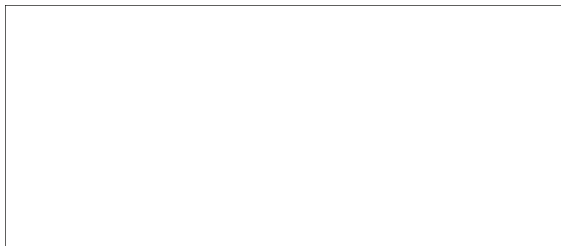
There is an additional charge for certain items



SUPPORT STAFF OR PERSONAL ATTENDANTS ARE WELCOME TO PARTICIPATE BUT ARE RESPONSIBLE FOR THEIR OWN SUPPLIES IN ADDITION TO THE \$25.00 FEE.

Class size is limited to 15 participants.

NORTHVIEW CENTER
 301 East Talmage
 Springfield, MO 65803
 2110-8150



TRANSPORTATION

The Park Board Bus offers transportation within Springfield for those who have **no other means** of getting to programs. Because bus space is limited and demand is great, please make arrangements if other transportation or carpooling is available.

SCHOLARSHIPS

This Accessible Recreation Scholarship program is available and intended for any adult 18 years of age and older, with a disability, who meet income guidelines. There is a limit of 50% of the activity fee per person per session. Scholarship amounts are limited by the amount of funding and are subject to availability.

LINE DANCE LESSONS

Do you like to dance or do you have two left feet? Regardless of your skill level, join us for this class at Northview Center. We will have fun and learn a new Country Western Line Dance (or two)!



7-week session: Jan 14– Feb 25 , 2010
 March 11– April 22, 2010

Register by: Dec 31, 2009
 March 5, 2010



Class meets on Thursdays from 3:45- 4:45pm **Fee:** \$16.00 for this 7-week session
 Transportation not available for this program!

THERAPEUTIC HORSEBACK RIDING

A COLLABORATION BETWEEN THE SPRINGFIELD-GREENE COUNTY PARK BOARD AND THERAPEUTIC RIDING OF THE OZARKS



Therapeutic Riding
 of the Ozarks
 a project of Council of
 Churches of the Ozarks

When: Fridays Starting in March (Dates TBA)
Time: 10:00am - 11:00am
Place: Memory Makers Therapy Arena 10175 W. Farm Road 156
 Republic, MO 65738
Cost: \$45 per class (total \$270)

Additional application forms must be completed and approved.
 Letter of acceptance will be mailed.

Limited to the first four participants who register.

REGISTRATION FORM FOR ACCESSIBLE RECREATION PROGRAMS for **any adult, 18 or over, with a disability.**

Registrations must be received by dates specified on the flyer!

Contact our office if you need assistance completing registration form.

Please make checks payable to: **Springfield-Greene County Park Board**

Include Driver License Number & Place of Employment.

If you must cancel, please submit letter at least five business days before the program starts.

There is a \$20.00 fee for all returned checks.

Choose from these options: a) Transfer to another program b) Request a refund, less a \$10.00 processing fee.
Refunds, if approved, take 2-3 weeks.

Please complete this form *front and back* and return with payment to:

ACCESSIBLE RECREATION PROGRAMS
301 East Talmage Springfield, MO 65803

PARTICIPANT INFORMATION

Participants Name: _____	Birth date: _____
Address _____	City/Zip _____ Phone _____
Participant's Disability: _____	
Special Accommodation: _____	

GUARDIANSHIP

If participant is under Guardianship, please indicate:		
Name of Guardian _____	Phone: _____	Cell: _____
Type of Guardianship (ie, Medical, Full, etc.): _____		

EMERGENCY INFORMATION

Name of person to notify in emergency:			
1. _____	Relation: _____	Phone: _____	Cell: _____
2. _____	Relation: _____	Phone: _____	Cell: _____

PROGRAM REGISTRATION INFORMATION

Name of Program	Session Time/Date	Class Fee	Transportation Fee <small>*Complete Transportation Section</small>	Total Fee

TOTAL ENCLOSED

