

CRUSE DOG PARK

NEWS & NOTES—JANUARY, 2012

BABY IT'S COLD OUTSIDE... With temperatures fluctuating upwards of 30 degrees on a daily basis, it is vital that we not only protect ourselves, but our treasured pets, from the elements. Bundle up in layers, cover your head and neck and keep hands and feet warm too. The same goes for our canine companions, a warm jacket can go a long way in protecting both young puppies and older dogs from frostbite and hypothermia. If your outdoor adventure includes a walk in snow or an area that has been treated with salt, remember these elements can be harmful to their paws and pads. A quick rinse or cleaning of their feet will help prevent any damage. Of course, it's also important to be mindful of the amount of time you and your dog spend at the dog park. Exposure to extreme temperatures can be harmful to both humans and canines and we advise you to be mindful of the time that you both spend outdoors. You wouldn't go out in the cold without taking a few precautions to make sure you're comfortable, safe and warm. Do the same for your dog. You'll both find yourselves looking forward to snow days and running and playing in winter.



DOG PARK HOTLINE. Cruse Dog Park has a 24-7 hotline. This is a recorded message that contains news and information about the Dog Park. It is updated monthly. The hotline number is 864-1404.

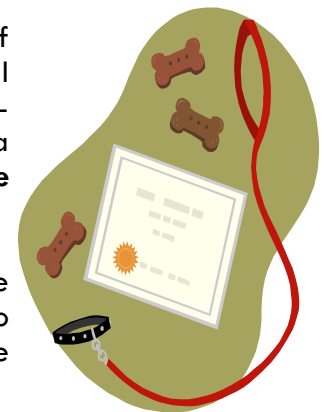
If you would like to speak to a human about the Dog Park, please contact the Park Board Administration Office at 864-1049. This office is open Monday—Friday, 8:00 a.m.—5:00 p.m., excluding legal holidays.

If you have an emergency, please call 9-1-1.



IT'S THE LAW. It is an ordinance in the City of Springfield that all dog's must be on a leash at all times. Cruse Dog Park petitioned and received special permission from City Council for the park to be a designed off-leash area. **ONLY the area inside the dog runs is the designated off-leash area.**

Please make sure that ALL dogs are on a leash while outside of the fenced area, especially as you walk to and from your vehicle. It is the law. Violators can be issued a ticket.



**SPRINGFIELD-GREENE
COUNTY PARK BOARD**

1923 North Weller
Springfield, MO 65803
Phone: 417-864-1049
Website: www.parkboard.org

CHECK OUT NEWS & INFORMATION

WWW.PARKBOARD.ORG - CRUSE DOG PARK LINK

NEWS & NOTES—JANUARY, 2012

PAGE 2

PARKS FOR CHILDREN. We all know how much kids love to run and play in the parks and the Springfield-Greene County Park Board boasts over 120 facilities and over 3,000 acres of lush green space for children to do just that.

Dogs now have that same opportunity at Cruse Dog Park, the **only** Springfield park specifically designed for dogs to run and play off-leash.



It is for the safety of **YOUR** child that anyone under the age of 8 is prohibited inside the fenced area of the Dog Park and anyone between the ages of 8 and 18 must be with an adult. Any dog may react adversely to a child's play and your child may be harmed.

A list of all the parks is available on our website at www.parkboard.org or by calling the Administration Office at 864-1049.

Anyone with a child inside the fenced area will be escorted from the Park.

Let's keep both our children and our dogs safe.

MARK YOUR CALENDARS. The 2012 Dog Park event dates have been set. These are all family-friendly activities, that also include the family pet. Check the Park Board website at www.parkboard.org and go to the Cruse Dog Park link. Promotional flyers and event registration forms will be posted shortly. You don't have to be a registered member of the Dog Park to participate in these fun activities!



BARK IN THE PARK

Saturday, June 9th
Nathanael Greene/Close Memorial Park

DOG SWIM

Tuesday, September 4th
Fassnight Pool

DOGFEST

Saturday, September 22nd
Chesterfield Park

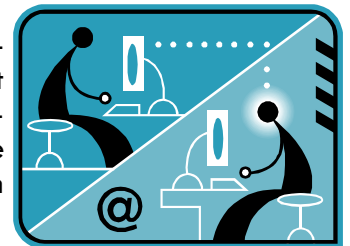
DACHSHUND DASH

Saturday, September 22nd
Chesterfield Park

All proceeds from these events go towards future development at Cruse Dog Park.

DON'T MISS A DAY AT THE PARK.

Vaccination and annual membership expiration reminders are sent to dog park owners one month prior to their expiration. Please make sure that we have your current e-mail address so we may get this information to you in a timely fashion. If you receive a notification and have any questions, give Michael a call at 864-1332 and he can look up your account. Also, your vet can fax in your pet's updated vaccination records to us at 863-1026. This way you won't miss a day at the park!



LOVE CRUSE DOG PARK? TELL A FRIEND.

HAVE A PROBLEM. TELL US! CALL US AT 864-1049.